

青島金宏豐精密製造有限會社(中國工場)

山東省青島市紅島區河套工業園匯和路70號
TEL:86-532-87921818 FAX:86-532-87922099
Http://www.qdjhongfeng.com
郵便番号:266113



東洋國際株式會社

〒124-0006 東京都葛飾区堀切19-10-502
TEL: 03-3839-6186 FAX:03-3838-6186
http://www.toyokokusai.com
E-mail:tyk1818@gmail.com

東洋國際株式會社
TOYOKOKUSAICO., LTD.

高压洗浄用ゴムホース



適用流体: 水、温水
内面: 耐水性合成ゴム
補強層: 硬鋼線

使用温度範囲: 0°C ~ + 80°C
外面: 耐摩耗、耐候性合成ゴム
補強層構造: ファイブレード

呼称	サイズ	内径	外径	補強層	最高使用圧力 Mpa	最小破壊圧力 Mpa	最小曲げ半径 mm	重量 g/m
WH2104	1/4	6.3	13.5	1W	20.5	63	65	210
WH2106	3/8	9.5	16.5	1W	20.5	63	80	290
WH2108	1/2	12.7	20	1W	20.5	63	95	360
WH4004	1/4	6.3	15.5	2W	40	120	90	380
WH4006	3/8	9.5	18.5	2W	40	120	90	450
WH4008	1/2	12.7	22.5	2W	40	120	120	620

※口元補強材は下記の内容にて対応が可能です。

口元ガードスプリング(材質: 鉄、SUS)



品番: 鉄=SP-C、SUS=SP-S

口元ガードビニルスリーブ(材質: PVC)

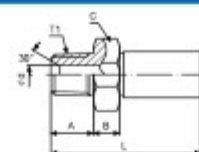


品番: PVC

ホース金具

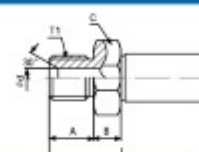
単位: mm

NO1



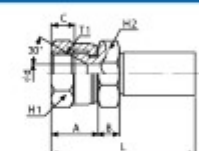
呼称	T1	A	B	φd	L	C (Hex)
1-4	R1/4	13	8	4.5	45	17
1-6	R3/8	15	9	7.5	50	19
1-8	R1/2	18	11	10	60	24

NO2



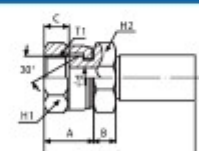
呼称	T1	A	B	φd	L	C (Hex)
2-4	G1/4	13	8	4.5	45	17
2-6	G3/8	15	9	7.5	51	19
2-8	G1/2	18	11	10	62	24

NO4



呼称	T1	A	B	C	φd	L	H1 (Hex)	H2 (Hex)
4-4	G1/4	16	8	8	4.5	50	19	17
4-6	G3/8	19	9	9	7.5	54	22	19
4-8	G1/2	21	9	11	10	62	27	24

NO5



呼称	T1	A	B	C	φd	L	H1 (Hex)	H2 (Hex)
5-4	G1/4	16	8	6	4.5	50	19	17
5-6	G3/8	19	9	7	7.5	54	22	19
5-8	G1/2	21	9	8	10	60	27	24

ご注文方法

①ホースアセンブリーをご注文の際は下記の表示方法でお申し付けください。(代表例)

ホース品名 × 長さ - 口元補強材
一端金具 + アダプター × 他端金具 + アダプター 本数
WH2108 × 20m SP-C 1-8 +4CSF(SUS) × 5-8 +4CPM(SUS) 20本

②ホース、金具を単体でご注文の際は下記の表示方法でお申し付けてください。

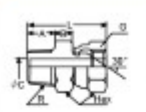
ホース品名 × 長さ 本数 または 金具品名 材質 本数

ストレートタイプアダプター

1006



SUS304



SS



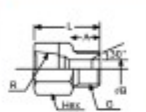
単位: mm

呼称	R	G	A	B	C	L	Hex
02	1/8	1/8	10	6	3.0	31	14
04	1/4	1/4	13	8	5.5	38	19
06	3/8	3/8	15	8	7.0	42	22
08	1/2	1/2	18	10	10.0	50	27
12	3/4	3/4	20	12	16.0	66	32
16	1	1	22	12	21.5	60	41
20	1 1/4	1 1/4	25	14	27.5	69	50
24	1 1/2	1 1/2	25	14	33.0	69	60
32	2	2	30	17	44.0	82	70

1007



SUS304



SS

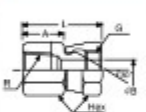


呼称	R	G	A	B	L	Hex
04	1/4	1/4	13	5.5	30	19
06	3/8	3/8	15	7.0	34	22
08	1/2	1/2	18	10.0	40	27
12	3/4	3/4	20	16.0	45	36
16	1	1	20	21.5	47	41
20	1 1/4	1 1/4	24	27.5	54	50
24	1 1/2	1 1/2	24	33.0	54	60
32	2	2	28	44.0	64	70

1008



SUS304



SS

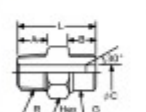


呼称	R	G	A	B	L	Hex
04	1/4	1/4	17	5.5	34	19
06	3/8	3/8	19	7.0	38	22
08	1/2	1/2	22	10.0	43	27
12	3/4	3/4	25	16.0	49	36
16	1	1	27	21.5	53	41
20	1 1/4	1 1/4	30	27.5	60	60
24	1 1/2	1 1/2	30	33.0	60	60
32	2	2	35	44.0	71	70

1009



SUS304



SS

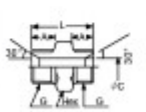


呼称	R	G	A	B	C	L	Hex
02	1/8	1/8	10	11	4.0	27	14
04	1/4	1/4	13	13	5.5	34	19
06	3/8	3/8	15	16	7.0	38	22
08	1/2	1/2	18	18	10.0	47	27
12	3/4	3/4	20	20	16.0	53	36
16	1	1	22	20	21.5	54	41
20	1 1/4	1 1/4	25	24	27.5	63	50
24	1 1/2	1 1/2	25	24	33.0	63	60
32	2	2	30	28	44.0	75	70

1011



SUS304



SS

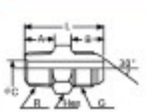


呼称	G	A	B	L	Hex
02	1/8	11	4.0	29	14
04	1/4	13	5.5	34	19
06	3/8	15	7.0	38	22
08	1/2	18	10.0	46	27
12	3/4	20	16.0	52	36
16	1	20	21.5	52	41
20	1 1/4	24	27.5	62	50
24	1 1/2	24	33.0	62	60
32	2	28	44.0	73	70

1013



SUS304



SS



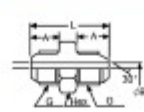
呼称	R	G	A	B	C	L	Hex
02	1/8	1/8	10	13.0	4.0	31.0	14
04	1/4	1/4	13	16.0	5.5	37.0	19
06	3/8	3/8	15	17.5	7.0	40.5	22
08	1/2	1/2	18	20.0	10.0	48.0	27
12	3/4	3/4	20	22	16.0	54	36
16	1	1	22	22.5	21.5	56.5	41
20	1 1/4	1 1/4	25	27.0	27.5	66.0	50
24	1 1/2	1 1/2	25	27.0	33.0	66.0	60
32	2	2	30	30.0	44.0	77.0	70

ストレートタイプアダプター

1014



SUS304



SS



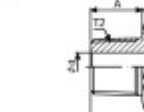
単位: mm

呼称	G	A	B	L	Hex
02	1/8	13.0	4.0	32	14
04	1/4	16.0	5.5	40	19
06	3/8	17.5	7.0	43	22
08	1/2	20.0	10.0	50	27
12	3/4	21.5	16.0	55	36
16	1	22.5	21.5	57	41
20	1 1/4	27.0	27.5	68	50
24	1 1/2	27.0	33.0	68	60
32	2	30.0	44.0	77	70

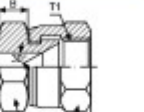
1016



SUS304



SS



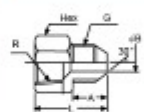
呼称	T1	T2	A	B	φd	L	C1 (Hex)	C2 (Hex)
04	G1/4	R1/4	13	8	4.5	38	19	19
06	G1/4	R1/2	15	8	7.5	42	22	22
08	G1/2	R1/2	18	10	10	50	27	27
12	G3/4	R3/4	20	12	16	56	36/32	36/32
16	G1	R1	22	12	22	60	41/38	41

(C内はステンレスのみです。)

1017



SUS304



SS

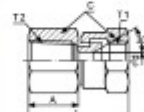


呼称	R	G	A	B	L	Hex
04	1/4	1/4	16.0	5.5	33.0	19
06	3/8	3/8	18	7.0	37	22
08	1/2	1/2	20.0	10.0	42.0	27
12	3/4	3/4	21.5	16.0	46.5	36
16	1	1	22.5	21.5	49.5	41
20	1 1/4	1 1/4	27.0	27.5	57.0	60
24	1 1/2	1 1/2	27.0	33.0	57.0	60
32	2	2	30.0	44.0	66.0	70

1018



SUS304



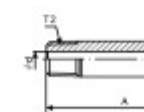
SS



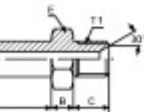
呼称	T1	T2	A	φd	L	C (Hex)
04	G1/4	R1/4	17	5.5	34	19
06	G3/8	R1/2	19	7	38	22
08	G1/2	R1/2	22	10	43	27
12	G3/4	R3/4	25	16	49	36/32
16	G1	R1	27	22	53	41

(C内はステンレスのみです。)

1009L

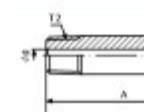


SS

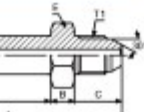


呼称	T1	T2	A	B	C	φd	L	E (Hex)
04	G1/4	R1/4	54	8	13	5.5	75	19
06	G3/8	R1/2	55	8	15	7	78	22
08	G1/2	R1/2	65	10	18	10	93	27

1013L



SS

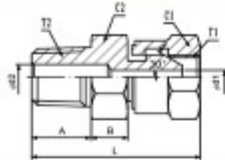


呼称	T1	T2	A	B	C	φd	L	E (Hex)
04	G1/4	R1/4	50	8	18	5.5	74	19
06	G3/8	R1/2	54	8	18	7	80	22
08	G1/2	R1/2	65	10	20	10	96	27
12	G3/4	R3/4	80	12	21.5	16	113.5	36
16	G1	R1	85	12	22.5	22	119.5	41

ストレートタイプアダプター

エルボータイプアダプター

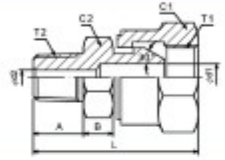
1006R



単位: mm

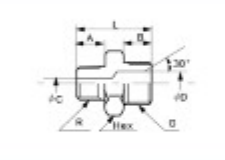
呼称	T1	T2	A	B	φd1	φd2	L	C1 (Hex)	C2 (Hex)
04-04	G $\frac{1}{8}$	R $\frac{1}{8}$	13	6	3	5.5	34	14	14
04-06	G $\frac{1}{8}$	R $\frac{1}{4}$	15	8	4.5	7	39	19	19
06-06	G $\frac{1}{8}$	R $\frac{1}{2}$	18	10	7	10	47	22	22
08-12	G $\frac{1}{2}$	R $\frac{1}{4}$	20	12	10	16	54	27	27
12-16	G $\frac{3}{4}$	R1	22	12	16	22	58	36	36

1006R



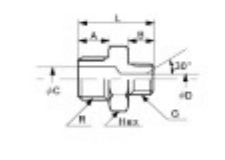
呼称	T1	T2	A	B	φd1	φd2	L	C1 (Hex)	C2 (Hex)
04-02	G $\frac{1}{8}$	R $\frac{1}{8}$	10	8	4.5	4	34	19	19
05-04	G $\frac{1}{8}$	R $\frac{1}{4}$	13	8	7.5	5.5	39	22	22
06-06	G $\frac{1}{2}$	R $\frac{3}{8}$	15	8	10	7	45	27	27
12-08	G $\frac{1}{4}$	R $\frac{1}{2}$	18	10	16	10	52	36	32
16-12	G1	R $\frac{3}{4}$	20	12	22	16	68	41	38

1009R



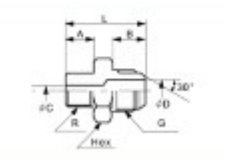
呼称	R	G	A	B	C	D	L	Hex
04-02	$\frac{1}{8}$	$\frac{1}{8}$	10	13	3.5	5.5	32	19
06-04	$\frac{1}{8}$	$\frac{1}{4}$	13	15	5.5	7.0	36	22
06-06	$\frac{3}{8}$	$\frac{1}{2}$	15	17	7.0	10.0	42	27
12-08	$\frac{1}{2}$	$\frac{3}{4}$	18	20	10.0	16.0	50	32
16-12	$\frac{3}{4}$	1	20	22	15.0	21.0	54	38
20-16	1	1 $\frac{1}{4}$	22	24	21.5	27.5	61	46
24-20	1 $\frac{1}{4}$	1 $\frac{1}{2}$	25	26	28.0	28.0	64	50
32-24	1 $\frac{1}{2}$	2	25	28	33.0	33.0	67	60

1009R



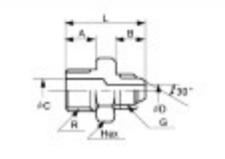
呼称	R	G	A	B	C	D	L	Hex
02-04	$\frac{1}{8}$	$\frac{1}{8}$	13	11	5.5	4.0	32	14
04-06	$\frac{3}{8}$	$\frac{1}{4}$	15	13	7.0	5.5	36	19
06-08	$\frac{1}{2}$	$\frac{3}{8}$	16	14	10.0	7.0	42	22
06-12	$\frac{3}{4}$	$\frac{1}{2}$	20	17	16.0	10.0	47	27
12-16	1	$\frac{3}{4}$	22	18	22.0	16.0	52	36
16-20	1 $\frac{1}{4}$	1	25	20	27.5	22.0	59	46
20-24	1 $\frac{1}{2}$	1 $\frac{1}{4}$	25	24	28.0	28.0	64	50
24-32	2	1 $\frac{1}{2}$	30	24	33.0	33.0	67	60

1013R



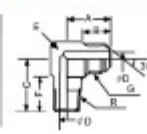
呼称	R	G	A	B	C	D	L	Hex
04-02	$\frac{1}{8}$	$\frac{1}{8}$	10	16.0	3.5	5.5	34.0	19
05-04	$\frac{1}{4}$	$\frac{3}{8}$	13	17.5	5.5	7.0	38.5	22
06-06	$\frac{3}{8}$	$\frac{1}{2}$	15	20.0	7.0	10.0	45.0	27
12-08	$\frac{1}{2}$	$\frac{3}{4}$	18	22	10.0	16.0	52	32
16-12	$\frac{3}{4}$	1	20	22.5	16.0	21.5	64.5	38
20-16	1	1 $\frac{1}{4}$	22	27.0	21.5	27.5	63.0	46
24-20	1 $\frac{1}{4}$	1 $\frac{1}{2}$	25	27.0	28.0	28.0	66.0	50
32-24	1 $\frac{1}{2}$	2	25	30.0	33.0	33.0	72.0	60

1013R



呼称	R	G	A	B	C	D	L	Hex
02-04	$\frac{1}{8}$	$\frac{1}{8}$	13	13	5.5	3.0	34	14
04-06	$\frac{3}{8}$	$\frac{1}{4}$	15	16.0	7.0	5.5	38.5	19
06-08	$\frac{1}{2}$	$\frac{3}{8}$	16	17.5	10.0	8.0	45.5	22
08-12	$\frac{3}{4}$	$\frac{1}{2}$	20	20.0	16.0	10.0	50.0	27
12-16	1	$\frac{3}{4}$	22	21.5	21.5	16.0	55.5	36
16-20	1 $\frac{1}{4}$	1	25	22.5	27.5	21.5	61.5	46
20-24	1 $\frac{1}{2}$	1 $\frac{1}{4}$	25	27.0	28.0	28.0	66.0	50
24-32	2	1 $\frac{1}{2}$	30	27.0	33.0	33.0	74.0	60

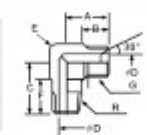
1033



単位: mm

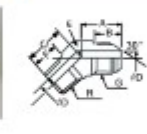
呼称	R	G	A	B	C	F	D	E
02	$\frac{1}{8}$	$\frac{1}{8}$	20.0	13.0	21.0	14.0	4.0	14
04	$\frac{1}{4}$	$\frac{1}{4}$	24.0	16.0	25.0	17.0	5.5	17
06	$\frac{3}{8}$	$\frac{1}{2}$	27.5	17.5	30.0	20.0	7.0	19
08	$\frac{1}{2}$	$\frac{3}{4}$	32.0	20.0	36.0	24.0	10.0	24
12	$\frac{3}{4}$	$\frac{1}{2}$	37	22	43.0	28.0	16.0	30
16	1	1	40.5	22.5	50.0	32.0	21.5	36
20	1 $\frac{1}{4}$	1 $\frac{1}{4}$	49.5	27.5	59.5	36.5	27.5	45
24	1 $\frac{1}{2}$	1 $\frac{1}{2}$	52.0	27.5	63.0	39.0	33.0	50
32	2	2	64.0	32.0	74.5	41.0	44.0	63

1034



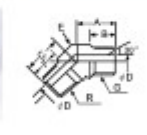
呼称	R	G	A	B	C	F	D	E
02	$\frac{1}{8}$	$\frac{1}{8}$	18.0	11	21.0	14	4.0	14
04	$\frac{1}{4}$	$\frac{1}{4}$	21.0	13	25.0	17	5.5	16
06	$\frac{3}{8}$	$\frac{1}{2}$	25.0	15	30.0	20	7.0	19
08	$\frac{1}{2}$	$\frac{3}{4}$	30.0	18	36.0	24	10.0	24
12	$\frac{3}{4}$	$\frac{1}{2}$	35.0	20	43.0	28	16.0	30
16	1	1	41.0	22	50.0	34	21.5	36
20	1 $\frac{1}{4}$	1 $\frac{1}{4}$	49.5	25	59.5	37	27.5	45
24	1 $\frac{1}{2}$	1 $\frac{1}{2}$	52.0	25	63.0	39	33.0	50
32	2	2	64.0	32	74.5	41	44.0	63

1035



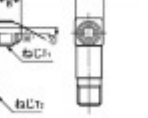
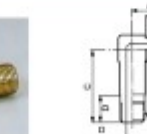
呼称	R	G	A	B	C	F	D	E
02	$\frac{1}{8}$	$\frac{1}{8}$	19.0	13.0	19	12	4	14
04	$\frac{1}{4}$	$\frac{1}{4}$	22.0	16.0	20	13	5.5	17
06	$\frac{3}{8}$	$\frac{1}{2}$	26	18	23	15	7.0	19
08	$\frac{1}{2}$	$\frac{3}{4}$	29	20.0	28	18	10.0	24
12	$\frac{3}{4}$	$\frac{1}{2}$	31.5	21.5	30	20	16.0	30
16	1	1	34.0	22.5	34	22	21.5	36
20	1 $\frac{1}{4}$	1 $\frac{1}{4}$	41.0	27.5	40	26	27.5	45
24	1 $\frac{1}{2}$	1 $\frac{1}{2}$	44.0	28.0	41	26	33.0	50
32	2	2	51.0	32.0	51	32	44.0	63

1036



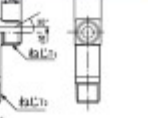
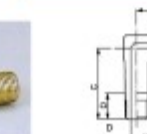
呼称	R	G	A	B	C	F	D	E
02	$\frac{1}{8}$	$\frac{1}{8}$	17	11	18	12	4	14
04	$\frac{1}{4}$	$\frac{1}{4}$	21	13	21	13	5.5	17
06	$\frac{3}{8}$	$\frac{1}{2}$	23	15	23	15	7.0	19
08	$\frac{1}{2}$	$\frac{3}{4}$	26	18	29	18	10.0	24
12	$\frac{3}{4}$	$\frac{1}{2}$	30	20	30	20	16.0	30
16	1	1	34	22	34	23	21.5	36
20	1 $\frac{1}{4}$	1 $\frac{1}{4}$	41	25	40	26	27.5	45
24	1 $\frac{1}{2}$	1 $\frac{1}{2}$	44	25	41	26	33.0	50
32	2	2	51	32	51	32	44.0	63

1033L



φC1	φC2	A	B	C	D	d	H	重量g
$\frac{1}{8}$ G	R $\frac{1}{8}$	24.0	16.0	5.7	17	5.5	16	95
$\frac{3}{8}$ G	R $\frac{1}{4}$	27.5	17.5	6.2	20	7.0	19	145
$\frac{1}{2}$ G	R $\frac{1}{2}$	32.0	20.0	6.4	24	10.0	24	230
$\frac{3}{4}$ G	R $\frac{3}{4}$	36.0	21.5	6.5	28	16.0	30	380

1034L

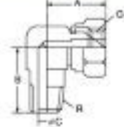


φC1	φC2	A	B	C	D	d	H	重量g
$\frac{1}{8}$ G	R $\frac{1}{8}$	21	13	5.7	17	5.5	16	90
$\frac{3}{8}$ G	R $\frac{1}{4}$	24	14	6.2	20	7.0	19	140
$\frac{1}{2}$ G	R $\frac{1}{2}$	29	17	6.4	24	10.0	24	240
$\frac{3}{4}$ G	R $\frac{3}{4}$	33	18	6.5	28	16.0	30	365

エルボータイプアダプター

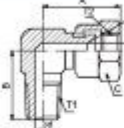
単位: mm

1033-S



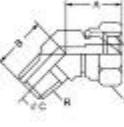
R	G	A	B	C	Hex
1/4	1/4	28	25	5.5	17
3/8	3/8	33	30	7.0	20
1/2	1/2	36	36	10.0	27
3/4	3/4	40	43	16.0	36
1"	1"	45	50	21.5	41

1034-S



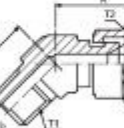
T1	T2	A	B	φd	Hex
R1/4	G1/4	28	25	5.5	17
R3/8	G3/8	33	30	7	20
R1/2	G1/2	36	36	10	27
R3/4	G3/4	40	43	16	36
R1	G1	45	50	21.5	41

1035-S



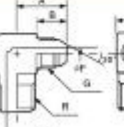
R	G	A	B	C	Hex
1/4	1/4	22	17	5.5	19
3/8	3/8	27	22	7.0	22
1/2	1/2	30	27	10.0	27
3/4	3/4	34	30	16.0	36
1"	1"	38	34	21.5	41

1036-S



T1	T2	A	B	φd	Hex
R1/4	G1/4	22	17	5.5	19
R3/8	G3/8	27	22	7	22
R1/2	G1/2	30	27	10	27
R3/4	G3/4	34	30	16	36
R1	G1	38	34	21.5	41

1033R



呼称	R	G	A	B	C	D	E	F	H
02-04	1/4	1/4	21.0	13.0	22	15	5.5	4.0	16
04-06	3/8	1/4	26.0	16.0	30	20	7.0	5.5	19
06-08	1/2	3/8	29.5	17.5	36	24	10.0	7.0	24
08-12	3/4	1/2	34	20.0	42	28	16.0	10.0	30
12-16	1	3/4	40.0	22.0	60	32	21.5	16.0	36

1033R

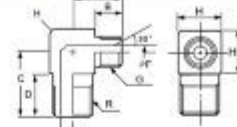


呼称	R	G	A	B	C	D	E	F	H
04-02	1/4	1/4	24.0	16.0	22	14	4.0	5.5	16
06-04	1/4	3/8	27.5	17.5	27	17	5.5	7.0	19
08-06	3/8	1/2	32.0	20.0	32	20	7.0	10.0	24
12-08	1/2	3/4	36	22	38	24	10.0	16.0	30
16-12	3/4	1	40.5	22.5	46	28	16.0	21.5	36

エルボータイプアダプター

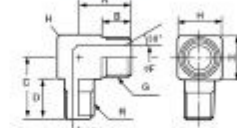
単位: mm

1034R



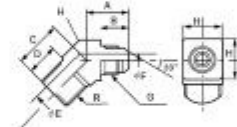
呼称	R	G	A	B	C	D	E	F	H
02-04	1/4	1/4	19	11	22	15	5.5	4.0	16
04-06	3/8	1/4	23	13	30	20	7.0	5.5	19
06-08	1/2	3/8	26	14	36	24	10.0	7.0	24
08-12	3/4	1/2	32	18	42	28	16.0	10.0	30
12-16	1	3/4	38	20	51	33	21.5	16.0	36

1034R



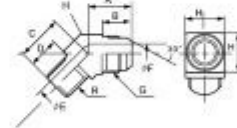
呼称	R	G	A	B	C	D	E	F	H
04-02	1/4	1/4	21	13	22	14	4.0	5.5	16
06-04	1/4	3/8	25	15	27	17	5.5	7.0	19
08-06	3/8	1/2	30	18	32	20	7.0	10.0	24
12-08	1/2	3/4	34	20	38	24	10.0	16.0	30
16-12	3/4	1	40	22	46	28	16.0	21.5	36

1035R



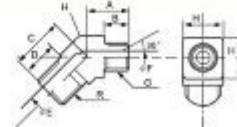
呼称	R	G	A	B	C	D	E	F	H
02-04	1/4	1/4	—	—	—	—	—	—	—
04-05	3/8	1/4	23.0	16.0	22	15	7.0	5.5	19
06-08	1/2	3/8	26.5	17.5	27	18	10.0	7.0	24
08-12	3/4	1/2	30.0	20.0	30	20	16.0	10.0	30
12-16	1	3/4	33.0	21.5	34	22	21.5	16.0	36

1035R



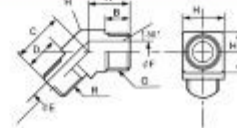
呼称	R	G	A	B	C	D	E	F	H
04-02	1/4	1/4	22.0	16.0	18	12	4.0	5.5	17
06-04	1/4	3/8	24.5	17.5	20	13	5.5	7.0	19
08-06	3/8	1/2	28.0	20.0	24	15	7.0	10.0	24
12-08	1/2	3/4	31.5	21.5	28	18	10.0	16.0	30
16-12	3/4	1	33.5	22.5	32	20	16.0	21.5	36

1036R



呼称	R	G	A	B	C	D	E	F	H
02-04	1/4	1/4	—	—	—	—	—	—	—
04-06	3/8	1/4	20	13	22	15	7.0	5.5	19
06-08	1/2	3/8	24	15	27	18	10.0	7.0	24
08-12	3/4	1/2	28	18	30	20	16.0	10.0	30
12-16	1	3/4	32	20	34	22	21.5	16.0	36

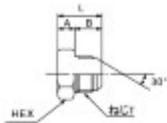
1036R



呼称	R	G	A	B	C	D	E	F	H
04-02	1/4	1/4	19	13	18	12	4.0	5.5	17
06-04	1/4	3/8	19	15	20	13	5.5	7.0	19
08-06	3/8	1/2	22	18	24	15	7.0	10.0	24
12-08	1/2	3/4	26	20	28	18	10.0	16.0	30
16-12	3/4	1	30	22	32	20	16.0	21.5	36

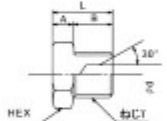
プラグタイプアダプター

MS-1



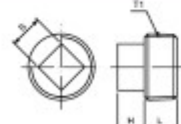
ねじ	L	A	B	Hex	重量g
1/8G	20.0	7	13.0	14	15
1/4G	24.0	8	16.0	17	35
3/8G	25.0	8	17.0	19	45
1/2G	30.0	10	20.0	22	75
3/4G	33.5	12	21.5	32	160
1 G	36.5	14	22.5	36	250
1 1/8G	41.0	14	27.0	46	460
1 1/4G	41.0	14	27.0	50	575
2 G	47.0	17	30.0	60	1,005

MS-3



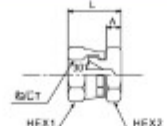
ねじ	L	A	B	φd	Hex	重量g
1/8G	21	8	13	5.5	17	30
3/8G	23	8	15	7.0	19	40
1/2G	28	10	18	10.0	22	70
3/4G	32	12	20	15.0	32	130
1 G	36	14	22	21.5	36	185
1 1/8G	38	14	24	27.5	46	340
1 1/4G	38	14	24	33.0	50	400
2 G	45	17	28	44.0	60	670

OP



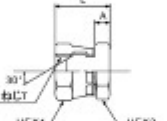
サイズ		T1	L	H	B
(A)	(B)				
6	1/8	R1/8	9	7	7
8	1/4	R1/4	11	9	9
10	3/8	R3/8	12	10	12
15	1/2	R1/2	15	11	14
20	3/4	R3/4	17	12	17
25	1	R1	19	13	19

MS-2



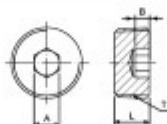
ねじ	HEX1	HEX2	L	A	重量g
1/8G	14	14	19	6	20
1/4G	19	17	23	8	40
3/8G	22	19	26	8	55
1/2G	27	22	29	10	80
3/4G	36	32	34	12	180
1 G	41	36	37	14	260
1 1/8G	50	46	42	14	375
1 1/4G	60	50	42	14	530
2 G	70	60	49	17	820

MS-4



ねじ	HEX1	HEX2	L	A	重量g
1/8G	19	17	25	8	50
3/8G	22	19	27	8	60
1/2G	27	22	32	10	100
3/4G	36	32	35	12	220
1 G	41	36	40	14	300
1 1/8G	50	46	43	14	510
1 1/4G	60	50	43	14	710
2 G	70	60	52	17	1,110

MP



サイズ	T1	L	B	A (Hex)
8	R1/4	10	4.5	8
10	R3/8	10	5	8
15	R1/2	12.5	6	10
20	R3/4	14	7	14
25	R1	17.5	9	17

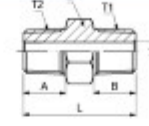
単位: mm

ねじ込みタイプアダプター

NS



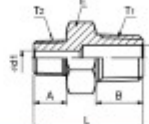
SUS304



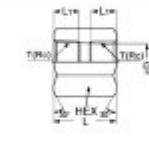
NSR



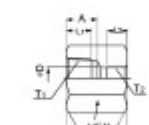
SUS304



HRC



HRE



単位: mm

呼称	T1	T2	A	B	φd	E (Hex)	L
02	R1/8	R1/8	10	10	4	12	26
04	R1/4	R1/4	13	13	7	17	34
06	R3/8	R3/8	15	15	9	21	37
08	R1/2	R1/2	17	17	12	26(22)	43
12	R3/4	R3/4	19	19	16	32(27)	48

○内のはステンレスの寸法です。

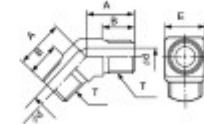
呼称	T1	T2	A	B	φd1	φd2	E (Hex)	L
02-04	R1/8	R1/8	10	13	4	7	17	31
02-06	R3/8	R3/8	10	15	4	9	21	33
04-06	R3/8	R3/8	13	15	7	9	21	36
05-06	R1/2	R3/4	14(16)	17(18)	9	12	26(22)	40(46)
08-12	R3/4	R1	17(18)	19	12	16	32(27)	46(48)

○内のはステンレスの寸法です。

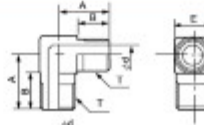
呼称	T(φc)	Dφ	L1	L	H
02	1/8	8.0	7.5	30	17
04	1/4	11.0	12.0	30	22
06	3/8	14.5	14.0	30	24
08	1/2	18.0	14.0	40	32
12	3/4	23.0	16.0	42	36
16	1	29.0	18.0	50	46
20	1 1/4	36.0	22.0	55	55
24	1 1/2	43.0	22.0	55	65
32	2	55.0	25.0	64	75

呼称	T1(φc)	T2(φc)	Dφ	A	L1	L2	L	H
05-04	1/8	1/4	11.0	15.0	13.0	12.0	30	24
08-04	1/2	1/4	11.0	18.0	14.0	12.0	40	32
08-08	1/2	3/8	14.5	18.0	14.0	14.0	40	32
12-08	3/4	1/2	14.5	20.0	16.0	14.0	42	36
12-08	3/4	1/2	17.0	20.0	16.0	15.0	42	36
16-08	1	1/2	17.0	23.0	18.0	15.0	50	46
16-12	1	3/4	23.0	23.0	18.0	18.0	50	46
20-12	1 1/4	3/4	23.0	26.0	22.0	18.0	55	55
20-16	1 1/4	1	29.0	26.0	22.0	18.0	55	55
24-16	1 1/2	1	29.0	28.0	24.0	18.0	55	65

PL-45



PL-90



呼称	ねじ	A	B	d	E
02	R1/8	17	12	4.0	14
04	R1/4	19	14	5.5	17
06	R3/8	22	16	7.0	19
08	R1/2	28	18	10.0	24
12	R3/4	30	20	16.0	30
16	R1	34	22	21.5	36
20	R1 1/4	40	25	27.5	45
24	R1 1/2	41	25	33.0	50
32	R2	50	30	44.0	63

呼称	ねじ	A	B	d	E
02	R1/8	20.0	13.0	4.0	14
04	R1/4	24.0	16.0	5.5	17
06	R3/8	27.0	17.0	7.0	19
08	R1/2	30.0	19	10.0	24
12	R3/4	36	23	16.0	30
16	R1	40.5	22.5	21.5	36
20	R1 1/4	49.5	27.0	27.5	45
24	R1 1/2	52.0	27.0	33.0	50
32	R2	61.5	30.0	44.0	63

ねじ込みタイプアダプター

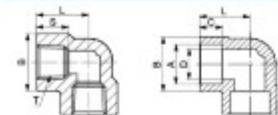
カプラ

単位: mm

単位: mm



エルボー



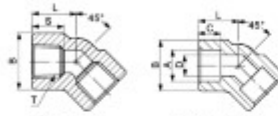
HLS

HWLS

呼称	T	A	B	C	D	L	S
04	R1/4	14.3	22	10	9.4	20	13
06	R1/2	17.8	26	13	12.7	24	15
08	R1/2	22.2	33	13	16.1	29	17
12	R3/4	27.7	38	16	21.4	34	19
16	R1	34.5	47	16	27.2	38	21
20	R1 1/4	43.2	57	18	35.5	45	24
24	R1 1/2	49.1	64	19	41.2	50.8	25
32	R2	61.1	77	22	52.7	60.1	30



45° エルボー



HLS45

HWLS45

呼称	T	A	B	C	D	L	S
04	R1/4	14.3	23	10	9.4	17.9	13
06	R1/2	17.8	26	13	12.7	20.9	15
08	R1/2	22.2	33	13	16.1	24.1	17
12	R3/4	27.7	38	16	21.4	28.7	19
16	R1	34.5	47	16	27.2	30.3	21
20	R1 1/4	43.2	57	18	35.5	36.5	24
24	R1 1/2	49.1	64	19	41.2	39.6	25
32	R2	61.1	77	22	52.7	47.4	30



チーズ



HTS

HWTS

呼称	T	A	B	C	D	L	S
04	R1/4	14.3	22.5	10	9.4	20	13
06	R1/2	17.8	26	13	12.7	24	15
08	R1/2	22.2	33	13	16.1	29	17
12	R3/4	27.7	38	16	21.4	32	19
16	R1	34.5	47	16	27.2	38	21
20	R1 1/4	43.2	57	18	35.5	45	24
24	R1 1/2	49.1	64	19	41.2	50.8	25
32	R2	61.1	77	22	52.7	60.1	30



クロス

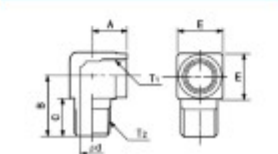


HXS

HWXS

呼称	T	A	B	C	D	L	S
04	R1/4	14.3	23	10	9.4	21.1	13
06	R1/2	17.8	26	13	12.7	26.5	15
08	R1/2	22.2	33	13	16.1	28.9	17
12	R3/4	27.7	38	16	21.4	35.1	19
16	R1	34.5	47	16	27.2	38.2	21
20	R1 1/4	43.2	57	18	35.5	45	24
24	R1 1/2	49.1	64	19	41.2	50.8	25
32	R2	61.1	77	22	52.7	60.1	30

HLM

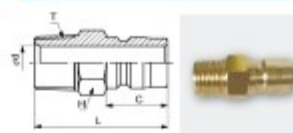


呼称	ねじT	ねじC	A	B	C	d	Hex
04	Rc1/4	R1/4	16.0	26	17	6	19
06	Rc1/2	R1/2	17.5	32	19	8	23
08	Rc1/2	R1/2	26.0	41	29	10	30
12	Rc3/4	R3/4	30.0	43	28	16	36
16	Rc1	R1	35.0	53	32	21	41

CPM



SUS304



B5BM

呼称	T	C	φd	L	H (Hex)	(g) B5BM	(g) SUS
2CPM	R1/4	18	6.5	38	17	33	30
3CPM	R3/8	21	10	43	19	47	38
4CPM	R1/2	24	13	52	22	88	81
6CPM	R3/4	28	17	59	32	179	165
8CPM	R1	36	25	73	41	297	274

CPF



SUS304



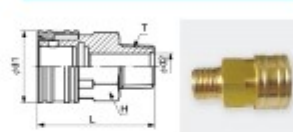
B5BM

呼称	T	C	φd	L	H (Hex)	(g) B5BM	(g) SUS
2CPF	R1/4	18	6.5	34	17	31	29
3CPF	R3/8	21	10	38	21	47	43
4CPF	R1/2	24	13	45	25x27	113	104
6CPF	R3/4	28	17	51	35	181	167
8CPF	R1	36	26	60	41	350	323

CSM



SUS304



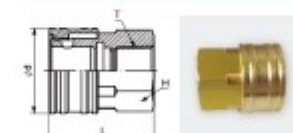
B5BM

呼称	T	φd1	φd2	L	H (Hex)	(g) B5BM	(g) SUS
2CSM	R1/4	24	6.5	42	19	72	67
3CSM	R3/8	28	10	46	23	108	100
4CSM	R1/2	35	13	56	29	194	179
6CSM	R3/4	45	18	65	38	374	346
8CSM	R1	68	24	76	50	685	633

CSF



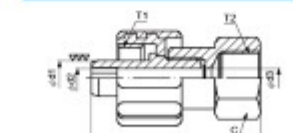
SUS304



B5BM

呼称	T	φd1	φd2	L	H (Hex)	(g) B5BM	(g) SUS
2CSF	R1/4	24.5	8	32	19	62	57
3CSF	R3/8	28	12	35	23	90	83
4CSF	R1/2	35	16	42	29	167	154
6CSF	R3/4	45	-	48	38	314	288
8CSF	R1	68	-	59	50	607	575

JC

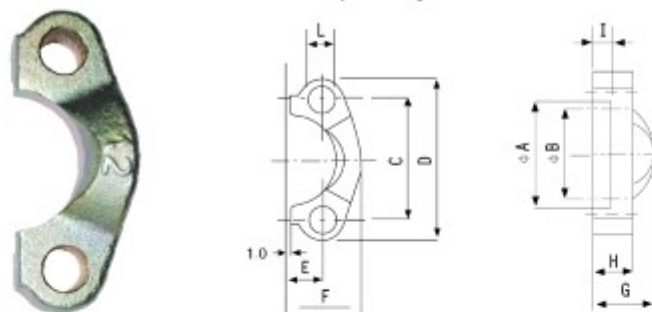


呼称	T1	T2	φd1	φd2	φd3	L	C (Hex)	(g)
JC-16	G1/2	R1/4	11	6	6	57	19	120
JC-17	G1/2	R3/8	11	6	6	58	22	140
JC-18	G1/2	R1/2	11	6	6	62	27	174

スプリットフランジ

主要設備

SAE split flang halves



SAE3000PS1

normal flange size	type	A±0.25	B±0.25	C±0.25	D	E±0.25	F±0.8	G	H	I±0.13	L±0.25
1/2"	SF-8	31	24.5	38.1	54	8.75	23	19	13	6.2	8.5
3/4"	SF-12	38.9	32.15	47.63	65	11.13	25.9	22	14.3	6.2	10.5
1"	SF-16	45.25	38.8	52.37	70	13.08	29.2	24	16	7.5	10.5
1 1/4"	SF-20	51.6	43.7	58.72	79	15.09	36.3	22	14	7.5	11.9
1 1/2"	SF-24	61.1	50.8	69.85	94	17.86	41.1	25	18	7.5	13.3
2"	SF-32	72.25	62.75	77.77	102	21.44	48.2	26	16	9	13.3

SAE6000PS1

normal flange size	type	A±0.25	B±0.25	C±0.25	D	E±0.25	F±0.8	G	H	I±0.13	L±0.25
1/2"	SFH-8	32.55	24.65	40.49	56	9.12	23.6	22	16	7.2	8.5
3/4"	SFH-12	42.1	32.5	50.8	71	11.91	30	28	19	8.25	10.5
1"	SFH-16	48.4	38.9	51.17	81	13.89	34.8	33	24	9	12.6
1 1/4"	SFH-20	54.8	44.5	66.68	95	15.88	38.6	38	27	9.8	13.3
1 1/2"	SFH-24	64.3	51.6	79.38	113	18.26	47.5	43	30	12	17
2"	SFH-32	80.2	67.6	96.82	133	22.23	56.9	52	37	12	21

